

**SimPET**  
Groundbreaking Technology

The most compact and reliable MRI-compatible PET insert for simultaneous PET/MRI studies in small animals



Proven, futureproof SiPM\* PET technology

Excellent PET detector stability

Sub-mm spatial resolution

Flexible modes of operation

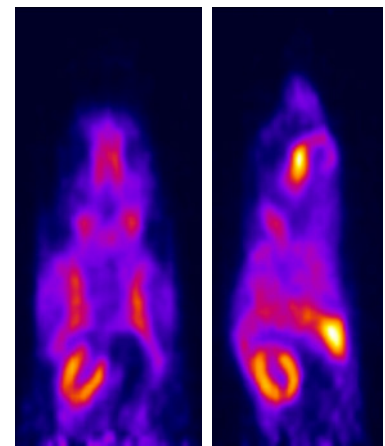
\*Silicon Photo Multiplier

**PET Specifications**

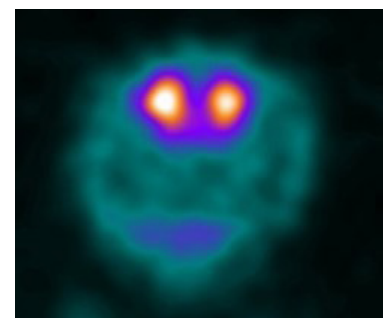
Characteristics	Value
Detector ring diameter (mm)	64
Scintillator materials	LSO
Crystal size (mm <sup>3</sup> )	1.2 × 1.2 × 10.0
Number of crystal rings	36
Number of crystals/ring	144
Total number of crystals	5184
Axial FOV (mm)	55
Insert inner diameter (mm)	60

**PET Performance**

Characteristics	Value
Scatter fraction for mouse	17%
Peak sensitivity	3.4%
Spatial resolution with 3D OSEM	<0.8 mm
Spatial resolution with FBP	<1.3 mm
Energy resolution	15%



Mouse [<sup>18</sup>F] FDG PET



Mouse [<sup>18</sup>F] FP-CIT PET